

Sustainable Mobility Advisory Panel

Community Consultation 2013 Municipal Budget

June 19, 2012

Samantha Baulch & Carol Craig

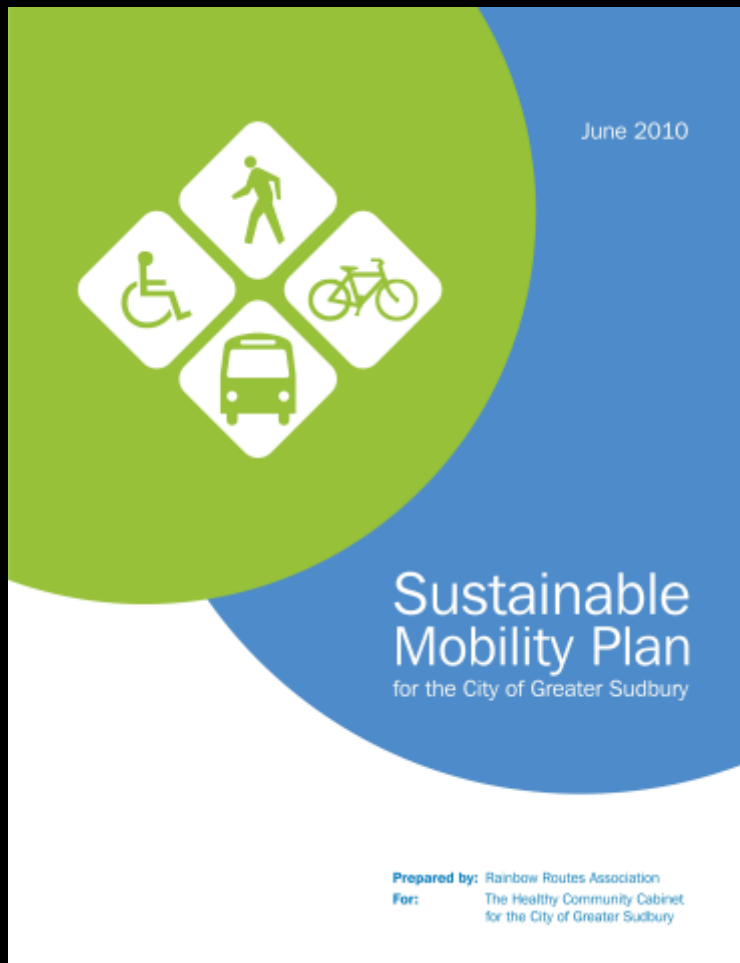


What is SMAP?

Mandate

To assist City of Greater Sudbury staff and Council in implementing a vision for a holistic approach to a multi-model transportation system where citizens can walk, cycle and/or use public transit efficiently and safely to get to their destinations.





The Sustainable Mobility Plan for the City of Greater Sudbury provides direction which will enable the City to move towards becoming the most pedestrian friendly city in Ontario by 2015.



Highlights of Progress Report

- ✓ Policy development
- ✓ Infrastructure
- ✓ Education



Considerations

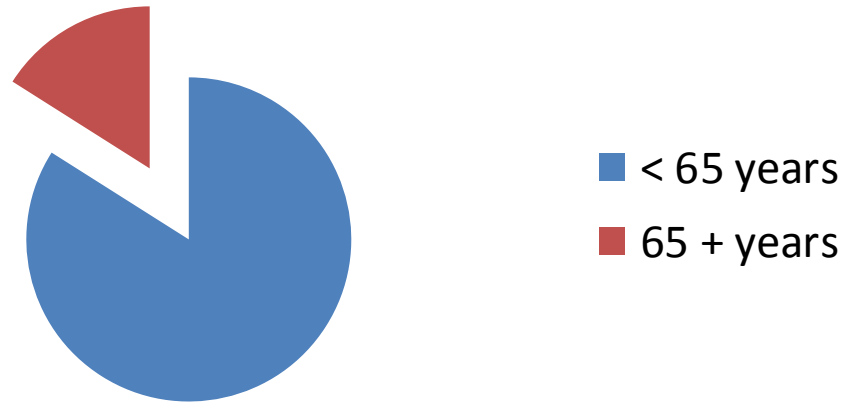
✔ Growth and settlement needs



Considerations

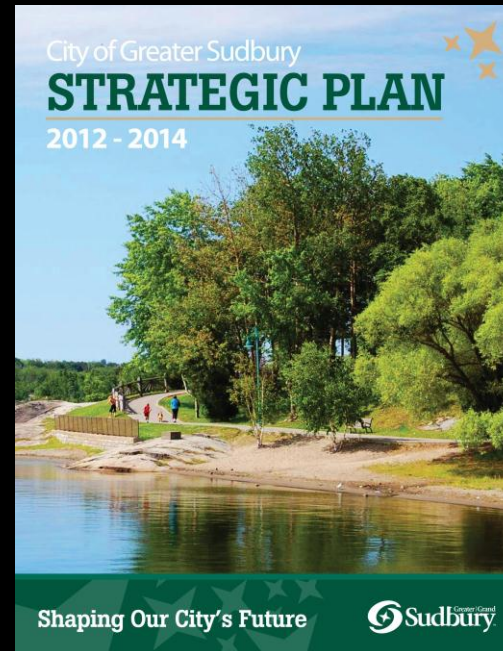
- ✓ Growth and settlement needs
- ✓ **Changing demographics**

Population by Age, 2011 Census



Considerations

- ✔ Growth and settlement needs
- ✔ Changing demographics
- ✔ **Healthy community**



Considerations

- ✔ Growth and settlement needs
- ✔ Changing demographics
- ✔ Healthy community
- ✔ **Livability**



Considerations

- ✔ Growth and settlement needs
- ✔ Changing demographics
- ✔ Healthy community
- ✔ Livability
- ✔ **Streets are for people**



Creative Solutions Required

✓ Lower speed limits



Creative Solutions Required

- ✓ Lower speed limits
- ✓ Public transit for secondary students



Creative Solutions Required

- ✔ Lower speed limits
- ✔ Public transit for secondary students
- ✔ **Work with developers**



Creative Solutions Required

- ✓ Lower speed limits
- ✓ Public transit for secondary students
- ✓ Work with developers
- ✓ **Temporary bike lanes**



Creative Solutions Required

- ✔ Lower speed limits
- ✔ Public transit for secondary students
- ✔ Work with developers
- ✔ Temporary bike lanes
- ✔ **Increased density**



2013 Budget Request

- ✔ Continue to make supportive policy decisions that make the easy choice the active choice.
- ✔ Commit to long term plans for sustainable mobility networks.
- ✔ Continue to fund and seek funding for sustainable mobility components of infrastructure projects.
- ✔ Conduct impact assessments for land use and transportation decisions and policies.



Thank You

